

SUBURBAN

1989 CHEVY TRUCKS



THE *Heartbeat* OF AMERICA  TODAY'S CHEVY TRUCK™

1989 SUBURBAN

Chevrolet® Suburban™ is the towing, hauling, 9-passenger superwagon with no serious competition — on or off the road.

Over half of the people in the market for a full-size, truck-based station wagon for personal use choose a Chevy™ Suburban. They're drawn to its unique good looks, V8 power, tremendously versatile carrying capabilities, and trailering can-do far in excess of any car-type wagon. A properly equipped 3/4-ton 2500 Series Suburban can move up to 16,000 lbs., including vehicle,

trailer, people, cargo and equipment.

Suburban is a matter of choice. After choice. After choice. There are no fewer than 16 Suburban models to choose from (8 gas, 8 diesel). These include two- and four-wheel-drive models, in both a 1/2-ton 1500 Series and 3/4-ton 2500 Series. Three-passenger seating is standard, and there are 2-, 5-, 6-, 8- and 9-passenger seating options. Dual rear panel-type doors are standard, and there's an optional wagon-type rear tailgate with available power window. You also get your pick of standard Scottsdale trim or the

top-level (and most ordered) Silverado trim with new-for-'89 interior enhancements. For even more choices, see Suburban's option listings on page 3.

The standard 1989 Suburban has power steering and power brakes, a Delco 2000 Series electronically tuned AM radio, 4-spoke sport steering wheel, a newly restyled body (new grille and body-side moldings), and a more lustrous finish, thanks to an advanced base-coat/clear-coat paint process.

STANDARD EQUIPMENT

Standard Interior

- Armrests: On RH and LH doors, padded.
- Ashtrays: Instrument panel and rear side door trim panels.
- Cigarette Lighter.
- Coat Hooks: RH and LH.
- Floor Covering: Color-keyed rubber mats.
- Gages and Switches: Gages — Speedometer, trip odometer, engine temperature, oil pressure, voltmeter and fuel.
- Switches — Lights, for interior, exterior and instrument panel. On steering column for direction signals, headlamp high/low beam, windshield washers/wipers, hazard warning. Heater fan and ignition with key-in warning buzzer.
- Headliner: Color-keyed, insulated.
- Heater and Defogger: Heavy-duty outside-air-type.
- Hood Lock Release: Inside-operated.

- Insulation and Sound-Deadening Material: On dash panel, under floor mats and on headliner.
- Lights: Instrument cluster and cab interior.
- Mirror, Rearview: 10" prismatic.
- Radio, Delco AM with mast antenna.
- Safety Belts: All seating positions, with shoulder belts in outboard positions.
- Seats: Full-width, full-depth foam front bench, with Custom Vinyl trim.
- Spare Tire Carrier: LH rear side.
- Steering Column and Wheel: 16" soft black plastic 2-spoke wheel with energy-absorbing column.
- Stowage Box: RH side of instrument panel, with key lock.
- Sunshades: RH and LH, color-keyed.
- Tools: Mechanical jack and wheel wrench.
- Trim Panels: Color-keyed molded plastic on side doors.

- Warning Lights: Safety belt, service/parking brake, direction/hazard signal and high beam.

Standard Exterior

- Bumpers: Front and rear, chromed.
- Doors: Two LH and two RH, plus two rear panel-type.
- Glass: Tinted, all windows.
- Grille: Rustproof, painted argent.
- Horn: Dual, electric, high- and low-note.
- Hubcaps: Bright metal with black trim.
- Lights: Backup lamps integral with tail lamps, two rectangular headlamps, plus front and rear direction and marker lamps.
- Mirrors: RH and LH painted, adjustable Below Eyeline type.
- Wheels: Painted white.
- Windshield Wipers and Washers: Electric, two-speed.



Shown on front cover: 4x4 V1500 Suburban with optional Silverado trim.

R2500 Suburban with standard Scottsdale trim.

APPEARANCE AND CONVENIENCE OPTIONS

- Air Conditioning, Front and Rear
- Bucket Seats
- Bumper Equipment: Deluxe Front and Rear Bumpers with Rub Strips; Chromed Front Bumper Guards (not available with Deluxe Bumpers)
- Comfortilt Steering Wheel
- Deluxe Front Appearance Package (includes Quad Halogen Headlamps and Dark Argent Grille with Bright Trim)
- Electric Clock w/Quartz Movement
- Glass, Deep-Tinted
- Heater, Rear
- Mirrors: Stainless Steel — Below Eye-line; Stainless Steel — Camper
- Moldings: Deluxe Moldings Package (included with Silverado, Conventional Two-Tone and Deluxe Two-Tone)
- Operating Convenience Package: Power Door Locks, Power Windows

- Radio Equipment, Delco: ETR™ Electronically Tuned AM/FM Stereo Radio; ETR AM/FM Stereo Radio w/Seek and Scan and Digital Clock; ETR AM/FM Stereo Radio w/Seek and Scan, Stereo Cassette Tape Player and Digital Clock; ETR AM Stereo*/FM Stereo Radio w/Seek and Scan, Stereo Cassette Tape Player w/Search and Repeat, Graphic Equalizer and Digital Clock
- Seats: 3-Passenger Folding Center, 3-Passenger Rear
- Tailgate Electric Window

*Receives C-Quam® stereo broadcasts. Most AM stereo stations across the country broadcast in C-Quam but some do not. Check with your local stations for compatibility in your area.



Optional electronic speed control with resume and accelerate features.

PERFORMANCE/HEAVY-DUTY EQUIPMENT OPTIONS

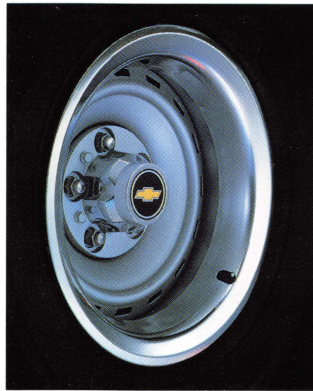
R1500*R2500*V1500*V2500*

Air Cleaner, Precleaner	■	■	■	■
Auxiliary Battery†	■	■	■	■
Cold Climate Package	■	■	■	■
Coolers: Engine Oil	■	■	■	■
Transmission Oil	■	■	■	■
Deadweight Trailer Hitch	■	■	■	■
Electronic Speed Control w/Resume and Accelerate Features	■	■	■	■
Front Quad Shocks	■	■	■	■
Front Stabilizer, Heavy-Duty	■	■	■	■
Front Tow Hooks	■	■	■	■
Fuel Tank, 40-Gal. (G) 41-Gal. (D)	■	■	■	■
Fuel Tank Stone Shield Plate	■	■	■	■
Heavy-Duty Battery†	■	■	■	■
Heavy-Duty Front and Rear Shocks	■	■	■	■
Heavy-Duty Front Springs	■	■	■	■
Heavy-Duty Radiator	■	■	■	■
Limited Slip Rear Axle Differential	■	■	■	■
Trailer Special Equipment	■	■	■	■
Wt.-Distributing Hitch Platform	■	■	■	■

■ Gas. ■ Both gas & diesel. ■ Standard. ■ Not available.

*R = 2WD. V = 4x4. 1500 = 1/2-ton. 2500 = 3/4-ton.

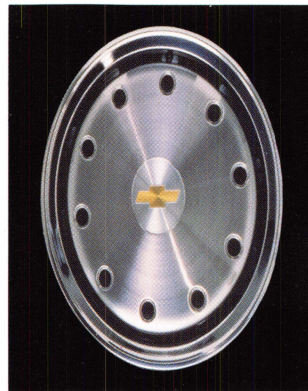
†Included with diesel engine. **Includes HD front/rear shocks on V10.



Rally Wheels.



Aluminum wheels.



Full wheel covers.

TRAILERING SPECIAL PACKAGE CONTENTS AND REQUIREMENTS

Gasoline Engine Models

Diesel Engine Models

	R1500	V1500	R2500	R2500	V2500	R1500	V1500	R2500	V2500
Engine — Liter (cu. in.)	350 V8 w/EFI*	350 V8 w/EFI	350 V8 w/EFI (Std.)	454 V8 w/EFI	350 V8 w/EFI (Std.)	6.2L V8	6.2L V8	6.2L V8	6.2L V8
Transmission	Auto	Auto	Auto	Auto	Auto	Auto	Auto	Auto	Auto
Rear Axle Ratio	2.73/3.08/3.42/3.73	3.42/3.73	3.42/3.73/4.10	3.42/3.73/4.10/4.56	3.73/4.10	3.42/3.73	3.42/3.73	3.73/4.10/4.56	3.73/4.10
Equipment included:									
Trailer Hitch Platform	■	■	■	■	■	■	■	■	■
Trailer Wiring Harness, 7-Wire	■	■	■	■	■	■	■	■	■
Engine Oil Cooler	■	■	■	■	■	■	■	■	■
Transmission Oil Cooler	■	■	■	■	■	■	■	■	■
Power Steering	■	■	■	■	■	■	■	■	■
HD Shocks, Front and Rear	■	■	■	■	■	■	■	■	■
Gross Combined Weight Rating (GCWR)	9,000/10,000/11,000/12,000	11,000/12,000	11,000/12,000/13,500	13,500/14,500/16,000	12,000/13,500	10,000/11,000	10,000/11,000	11,000/12,000	11,000/12,000

*Electronic Fuel Injection. ■ Included in package. ■ Standard. R = 2WD. V = 4x4. 1500 = 1/2-ton. 2500 = 3/4-ton.

ENGINE LINEUP

Series 1500 Models

Series 2500 Models

Displacement — Liter (cu. in.)	5.7 (350) V8 w/EFI*	6.2L V8 Diesel	5.7L (350) V8 w/EFI	7.4L (454) V8 w/EFI	6.2L V8 Diesel
Engine Ordering Code	L05†	LH6	L05†	L19	LL4
Bore & Stroke	4.0 x 3.48	3.98 x 3.82	4.0 x 3.48	4.25 x 4.0	3.98 x 3.82
Compression Ratio	9.3 to 1	21.3 to 1	8.6 to 1	7.9 to 1	21.3 to 1
SAE Net Horsepower @ RPM	210 @ 4000	130 @ 3600**	190 @ 4000	230 @ 3600	148 @ 3600**
SAE Net Torque (lb.-ft.) @ RPM	300 @ 2800	240 @ 2000**	300 @ 2400	385 @ 1600	259 @ 2000**

*Electronic Fuel Injection. †Produced in U.S. and Canada. **1988 ratings. See your dealer for 1989 ratings.

SPECIFICATIONS – GAS

Series	R1500		R2500		V1500		V2500	
GVW Range (lb.) — Std./Opt.	6100/6800		8600		6250/7000		8600	
Availability	Standard	Optional	Standard	Optional	Standard	Optional	Standard	Optional
Engine — Liter (cu. in.)	5.7L (350)	—	5.7L (350)	7.4L (454)	5.7L (350)	—	5.7L (350)	—
Front Suspension — Type/Spring	Independent-Coil Springs				Hypoid Driving Axle-Leaf Springs			
— Capacity (lb.)	3250	—	3800	—	3700	—	3800	—
Rear Suspension — Axle Type	Semi-Floating*				Semi-Floating*			
— Capacity (lb.)	4000	—	6000	—	4000	—	6000	—
Brakes — Disc/Drum	Power	—	Power	—	Power	—	Power	—
Steering — Type	Power	—	Power	—	Power	—	Power	—
Transmission — Manual	—	—	4-Spd.	—	4-Spd.	—	4-Spd.	—
— Automatic	4-Spd. Auto/OD	—	—	3-Spd. Auto	—	4-Spd. Auto/OD	—	3-Spd. Auto.
Transfer Case — Manual Locking Front Hubs	—	—	—	—	New Process 241		New Process 241	
Tire Size — Tubeless	P235/75R-15	—	LT235/85R-16 E	—	P235/75R-15	—	LT235/85R-16 E	—

Tire load range — E (10PR). *Full-floating design included with 7.4L 454 engine. R = 2WD. V = 4x4. 1500 = ½-ton. 2500 = ¾-ton.

SPECIFICATIONS – DIESEL

Series	R1500		R2500		V1500		V2500	
GVW Range (lb.) — Std./Opt.	6400/7000		8600		6800/7300		8600	
Availability	Standard	Optional	Standard	Optional	Standard	Optional	Standard	Optional
Engine — Liter (cu. in.)	6.2L (379)*	—	6.2L (379)	—	6.2L (379)*	—	6.2L (379)	—
Front Suspension — Type/Spring	Independent-Coil Springs				Hypoid Driving Axle-Leaf Springs			
— Capacity (lb.)	3400	—	3800	—	3700	—	3800	—
Rear Suspension — Axle Type	Semi-Floating				Semi-Floating			
— Capacity (lb.)	4000	—	6000	—	4000	—	6000	—
Brakes — Disc/Drum	Power	—	Power	—	Power	—	Power	—
Steering — Type	Power	—	Power	—	Power	—	Power	—
Transmission — Manual	—	—	—	—	—	—	—	—
— Automatic	4-Spd. Auto/OD	—	3-Spd. Auto	—	4-Spd. Auto/OD	—	3-Spd. Auto.	—
Transfer Case — Manual Locking Front Hubs	—	—	—	—	New Process 241		New Process 241	
Tire Size — Tubeless	P235/75R-15	—	LT235/85R-16 E	—	P235/75R-15	—	LT235/85R-16 E	—

Tire load range — E (10PR). *Not available in California. R = 2WD. V = 4x4. 1500 = ½-ton. 2500 = ¾-ton.

EXTERIOR TRIMS

Scottsdale. Front and rear chromed bumpers; tinted glass in all windows; light argent grille; bright metal hubcaps with black trim; painted silver wheels.

Silverado. Chrome trim on grille; dual quad halogen headlamps; bright accent on bumpers and black body-side moldings; bright wheel-opening moldings; Rally Wheels.

INTERIOR TRIMS

Scottsdale. Full-width front bench seat with choice of standard Custom Vinyl or optional

Deluxe Cloth trim; AM radio (may be deleted for credit); embossed, color-keyed floor mats in front seat area; full-length plastic headliner; front and rear dome lamps; spare tire cover (when spare tire is ordered).

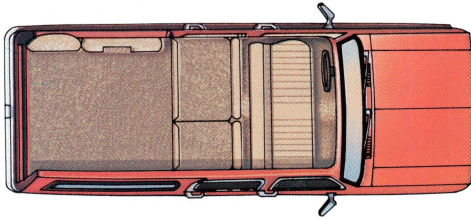
Silverado. Standard full-width front bench seat or optional reclining front bucket seats with Custom Cloth; simulated wood-grain instrument panel and door trim applique; color-keyed carpeting; headlamps-on warning buzzer; foam-backed cloth headliner; extra insulation in floor, color-keyed door trim panels and headliner; power door locks;

4-spoke Sport steering wheel; electric tailgate window (when tailgate model ordered); door-closing assist straps; center console with storage and beverage pockets.

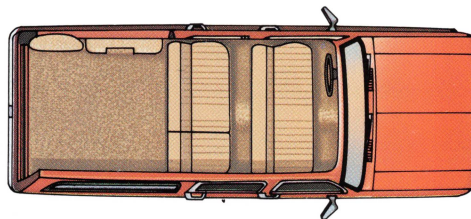
SEAT AVAILABILITY Trim Levels

Seat Type	Scottsdale	Silverado
Custom Vinyl Bench	■	■
Deluxe Cloth Bench	■	■
Custom Cloth Bench	■	■
Custom Cloth Reclining Buckets	■	■

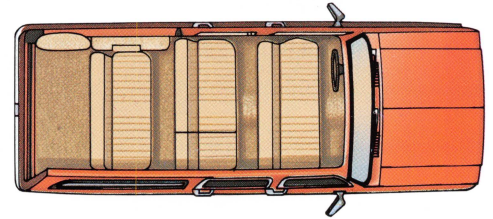
■ Standard. ■ Optional. ■ Not available.



Standard front bench seat provides 3-passenger seating, and optional second bench seat folds flat, leaving space for up to 167.0 cu. ft. of cargo.



With the optional second bench seat in the upright position, Suburban offers 6-passenger seating and up to 104.4 cu. ft. of cargo space.



Seating for up to nine (including optional second and third bench seats) leaves you space for up to 40.8 cu. ft. of cargo.



Custom Vinyl bench seat.



Deluxe Cloth bench seat.



Custom Cloth reclining bucket seats.

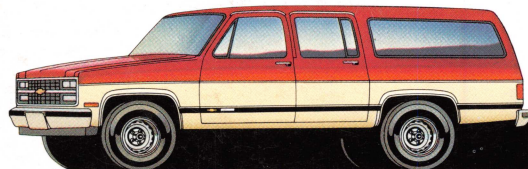


Suburban interior with optional Silverado trim and optional seating for eight passengers.

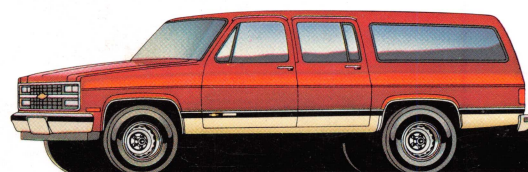
EXTERIOR COLORS



OPTIONAL TWO-TONES



Special Two-Tone includes side and rear decal striping, plus a hood ornament, with secondary color below.



Conventional Two-Tone includes black vinyl body-side and rear moldings with secondary color below.



Deluxe Two-Tone includes moldings and side and rear decal striping, plus a hood ornament, with secondary color between moldings and striping.

INTERIOR & EXTERIOR COLOR AVAILABILITY

TRIM LEVEL Seat Type	INTERIOR COLORS			
	Dk. Blue	Burgundy	Saddle	Slate Gray
SCOTTSDALE				
Custom Vinyl Bench Seat	■		■	
Deluxe Cloth Bench Seat	■		■	
SILVERADO				
Custom Cloth Bench Seat	■	■	■	■
Custom Cloth Reclining Bucket Seat	■	■	■	■
EXTERIOR COLORS				
Solid and Conventional Two-Tone*				
RECOMMENDED INTERIOR TRIM COLOR				
BEIGE, MOJAVE				
Black, Onyx			■	
Blue, Midnight (Metallic)			■	
Gold, Sunset (Metallic)			■	
Wintergreen			■	
BLACK, ONYX				
Beige, Mojave	■	■	■	■
Gold, Sunset (Metallic)			■	
Gray (Metallic)		■		■
Quicksilver (Metallic)		■		■
Red, Fire				■
White, Summit	■	■	■	■
BLUE, SMOKE (Metallic)				
Blue, Midnight (Metallic)	■			■
Gray (Metallic)	■			■
Quicksilver (Metallic)	■			■
White, Summit	■			■
BLUE, MIDNIGHT (Metallic)				
Beige, Mojave			■	
Blue, Smoke (Metallic)	■			
Gold, Sunset (Metallic)			■	
Gray (Metallic)			■	
Quicksilver (Metallic)	■			■
White, Summit	■			■
GOLD, SUNSET (Metallic)				
Beige, Mojave			■	
Black, Onyx			■	
Wintergreen			■	
GRAY (Metallic)				
Black, Onyx	■	■		■
Blue, Midnight (Metallic)	■			■
Red, Fire				■
White, Summit		■		■
Wintergreen				■
QUICKSILVER (Metallic)				
Black, Onyx		■		■
Blue, Smoke (Metallic)	■			■
Blue, Midnight (Metallic)	■			■
Red, Fire		■		■
White, Summit	■	■	■	■
RED, FIRE				
Beige, Mojave			■	
Black, Onyx				■
Gold, Sunset (Metallic)			■	
Gray (Metallic)				■
Quicksilver (Metallic)				■
White, Summit				■
WHITE, SUMMIT				
Beige, Mojave			■	
Black, Onyx	■	■	■	■
Blue, Smoke (Metallic)	■			
Gold, Sunset (Metallic)			■	
Gray (Metallic)		■		■
Quicksilver (Metallic)	■			■
Red, Fire				■
WINTERGREEN				
Beige, Mojave			■	
Gold, Sunset (Metallic)			■	

*For Special Two-Tone and Deluxe Two-Tone combinations, see your Chevy truck dealer.

Important: A Word About This Catalog. We have tried to make this catalog as comprehensive and factual as possible. We reserve the right, however, to make changes at any time, without notice, in prices, colors, materials, equipment, specifications, models and availability. Since some information may have been updated since the time of printing, please check with your Chevrolet dealer for complete details, including details on the GM warranty which covers Chevrolets.

A Word About Engines. Chevrolets are equipped with engines produced by different operating units of GM, its subsidiaries or suppliers to GM worldwide.

A Word About Assembly of Chevrolets. Chevrolets are assembled by different operating units of General Motors, its subsidiaries or suppliers to GM worldwide. Chevrolets incorporate thousands of components produced by different operating units of GM, its subsidiaries or suppliers to GM worldwide. We sometimes find it necessary to produce Chevrolets with different or differently sourced components than originally scheduled. All such components have been approved for use in Chevrolets and will provide the quality performance associated with the Chevrolet name. Since some options may be unavailable when your vehicle is assembled, we suggest that you verify that your vehicle includes the equipment you ordered or, if there are changes, that they are acceptable to you.

A Word About Updated Service Information. Chevrolet regularly sends its dealers useful service bulletins about Chevrolet products. Chevrolet monitors product performance in the field. We then prepare bulletins for servicing our products better. Now you can get these bulletins, too. Ask your dealer. To get ordering information, call toll-free 1-800-551-4123.

GMAC Financing. At your Chevrolet dealer's, financing or leasing your new Chevy truck can be as easy as saying **GMAC**.

©1988 General Motors Corporation. All rights reserved.

**LET'S GET IT TOGETHER...
BUCKLE UP.**



LITHO IN U.S.A. 4837 7/88